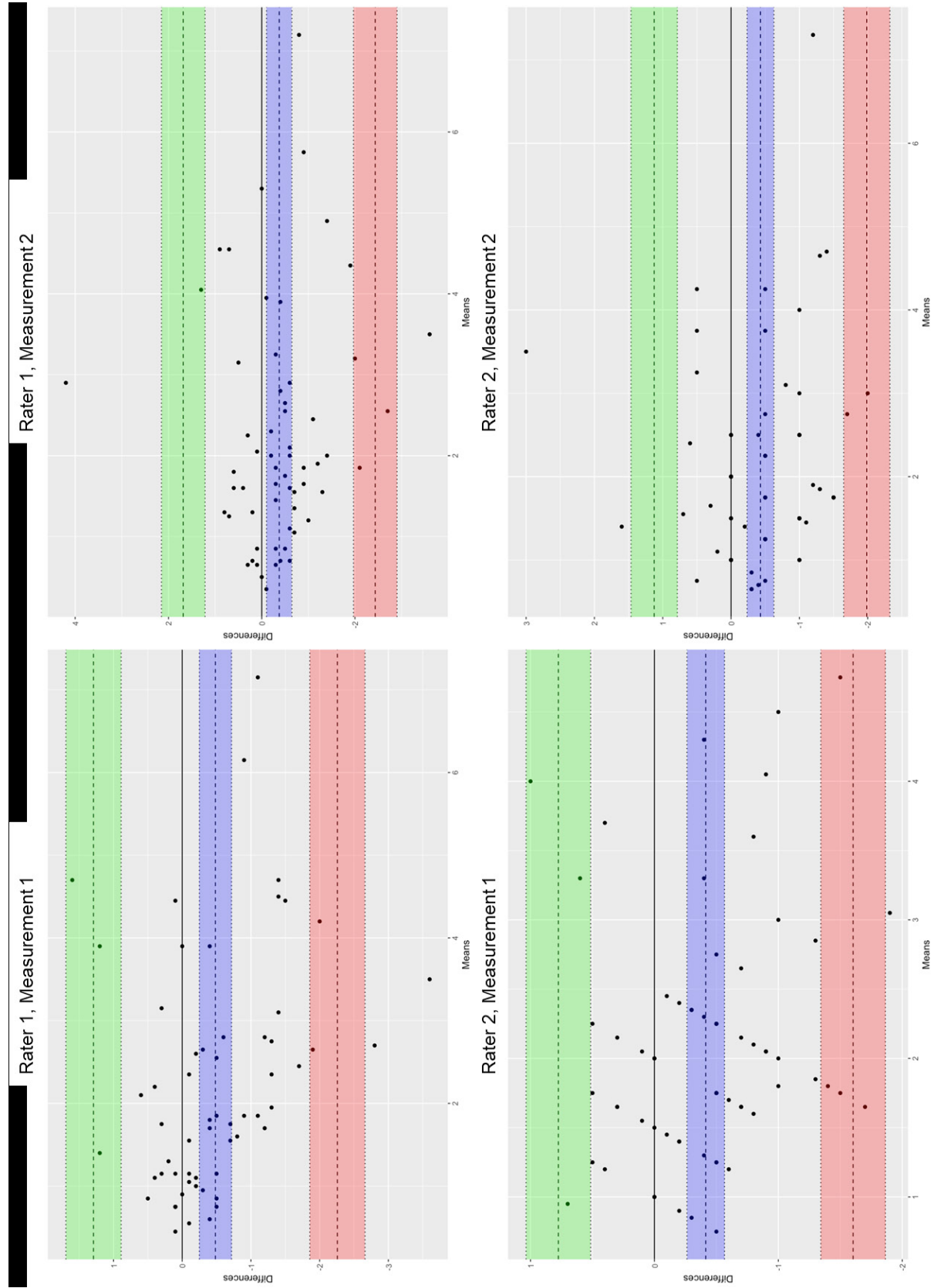
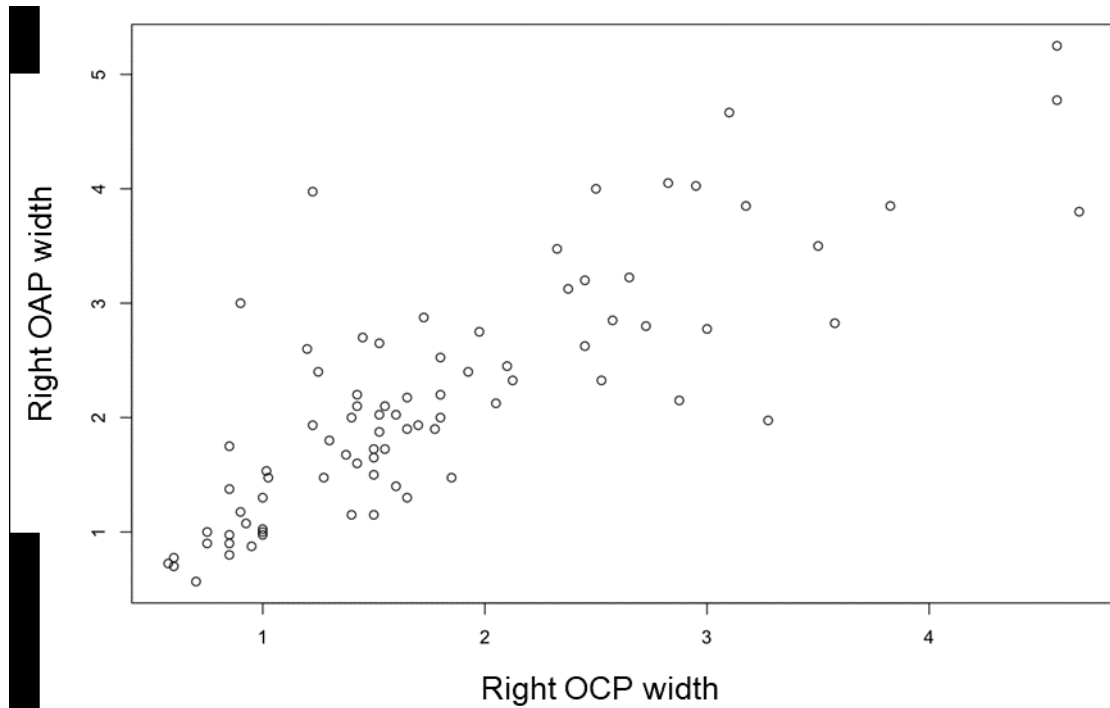


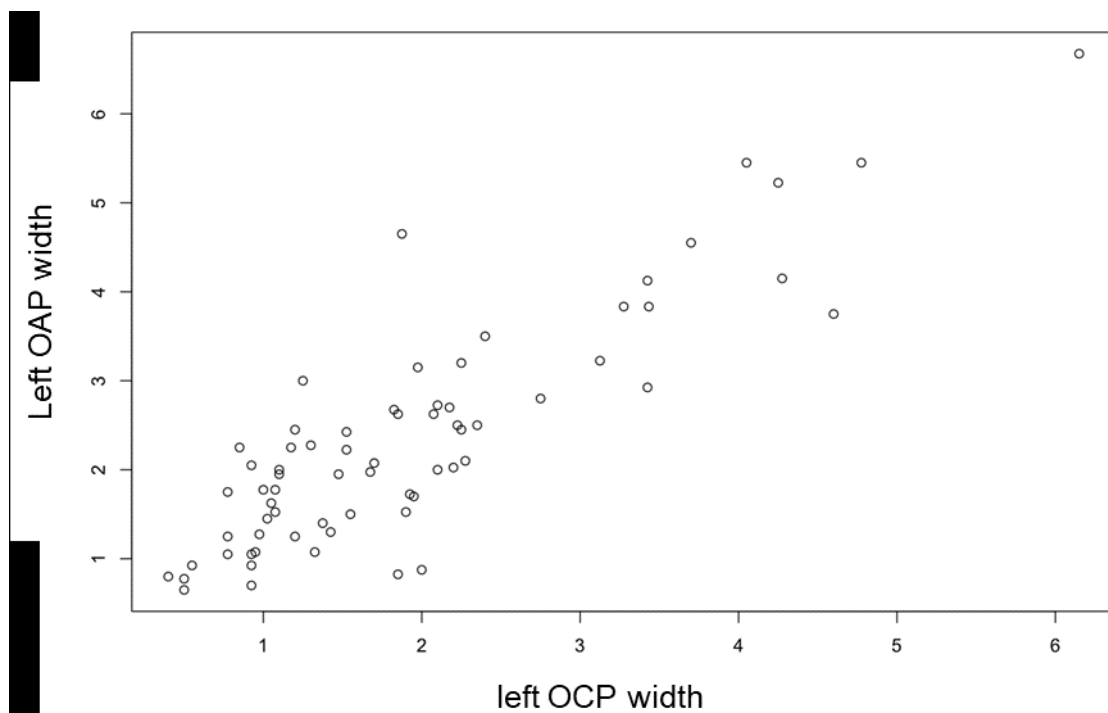
Supplementary Figure S1. Bland-Altman plots comparing width measurements in the OCP and OAP per rater measurement on the right side. Left top: rater 1, measurement 1; right top: rater 1, measurement 2; left bottom: rater 2, measurement 1; right bottom: rater 2, measurement 2
 OCP – oblique coronal plane, OAP – oblique axial plane



Supplementary Figure S2. Bland-Altman plots comparing width measurements in the OCP and OAP per rater measurement on the right side. Left top: rater 1, measurement 2; left bottom: rater 2, measurement 1; right bottom: rater 2, measurement 2; right top: rater 1, measurement 1. OCP – oblique coronal plane, OAP – oblique axial plane.

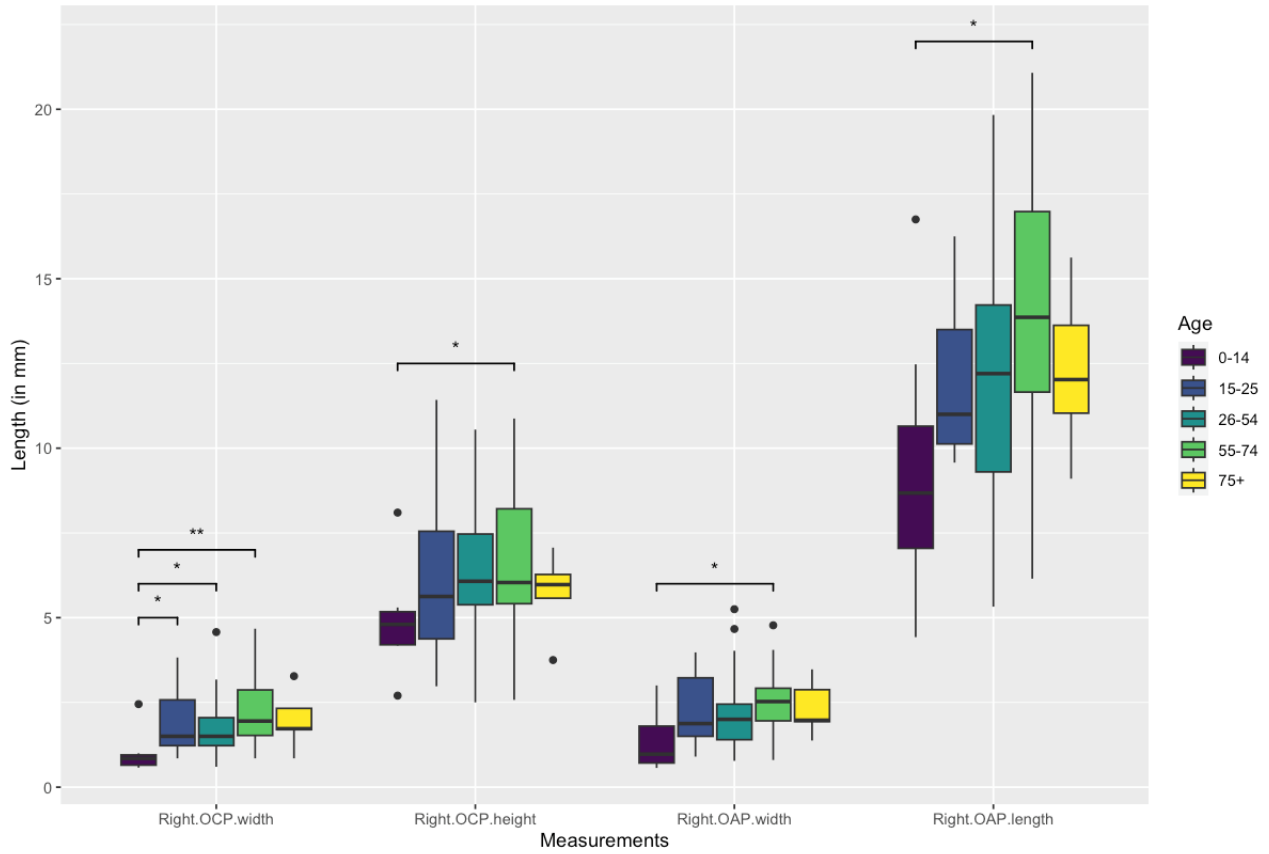


Supplementary Figure S3. Correlations of averaged width measurements (in mm) between the OCP and OAP in the right foot
OCP – oblique coronal plane, OAP – oblique axial plane.



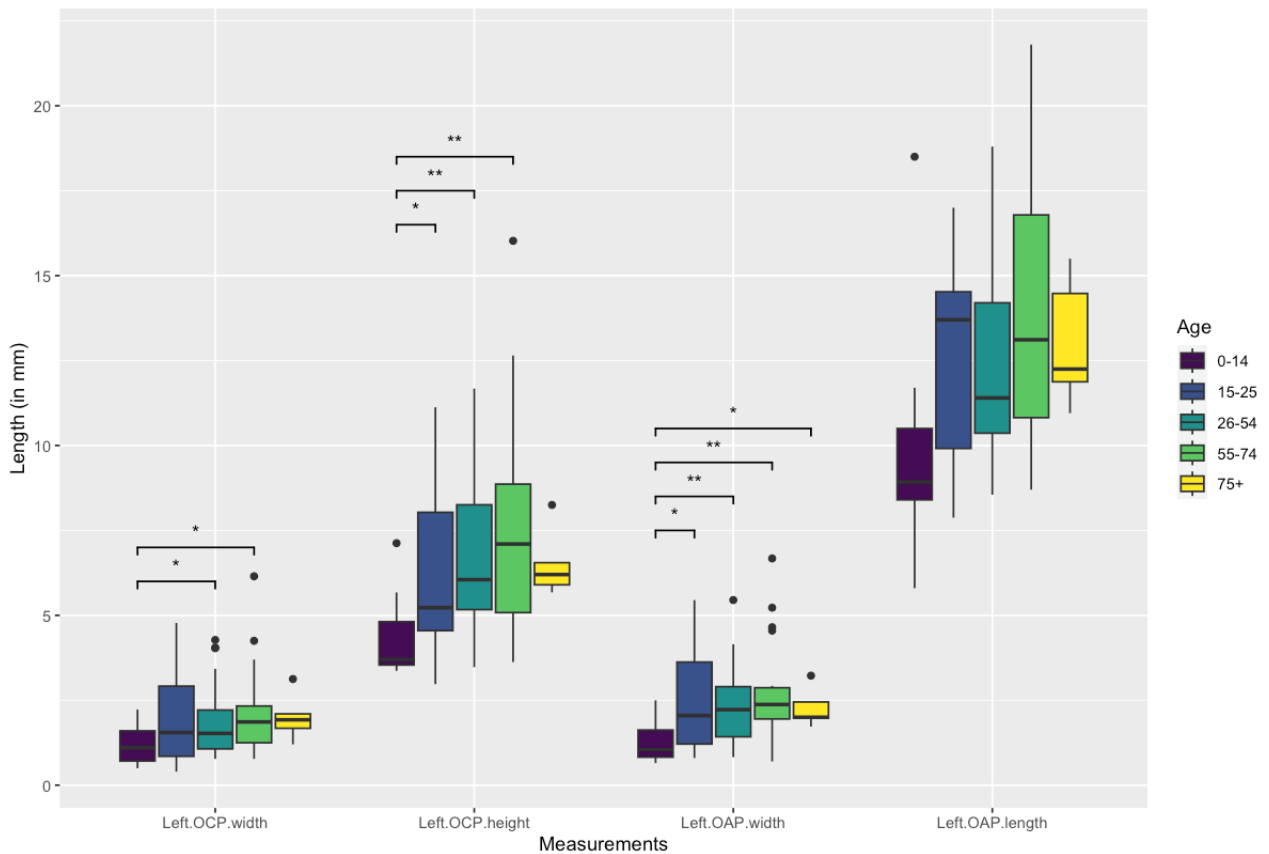
Supplementary Figure S4. Correlations of averaged width measurements between the OCP and OAP (in mm) in the left foot
OCP – oblique coronal plane, OAP – oblique axial plane.

Measurements over age groups



Supplementary Figure S5. Boxplots depicting the measurements of the right foot per age group (0-14 years, 15-25 years, 26-54 years, 55-74 years and 75+ years). Significance levels between age groups are indicated above the bars (* $p < 0.05$, ** $p < 0.01$)

Measurements over age groups



Supplementary Figure S6. Boxplots depicting the measurements of the left foot per age group (0-14 years, 15-25 years, 26-54 years, 55-74 years and 75+ years). Significance levels between age groups are indicated above the bars (* $p < 0.05$, ** $p < 0.01$)